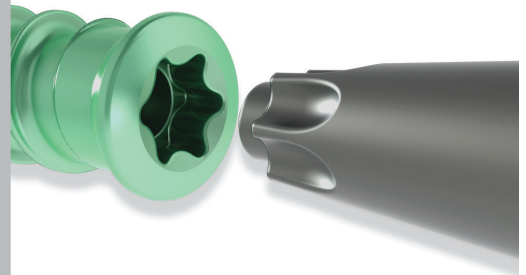


ASPIRON™ Anterior Cervical Plate System

The ASPIRON™ Anterior Cervical Plate System components are temporary implants that are intended for anterior interbody screw/plate fixation of the cervical spine during the development of a cervical spinal fusion.



Torx screw head

for a strong interface with a screwdriver

Lengthwise window

facilitates bone graft visualization

Instruments ergonomically designed

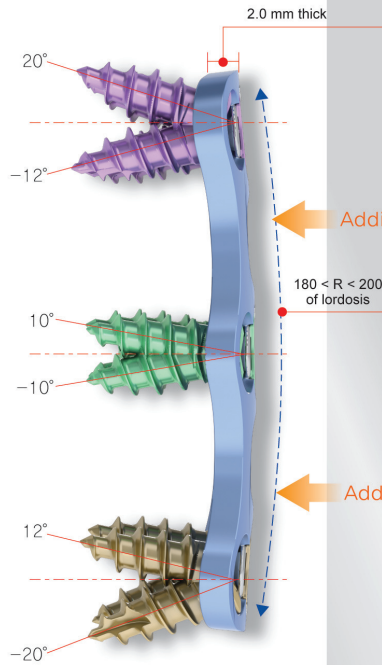
for simplified implantation

Self-tapping/-drilling bone screws

to eliminate the need for preliminary bone preparation

Color coded fixed and variable screws

to offer surgeons flexibility with technique for rigid or hybrid stabilization



Low-profile design

to minimize interference with anatomical soft tissue structures to reduce esophageal irritation or potential of dysphagia

Additional bending zone

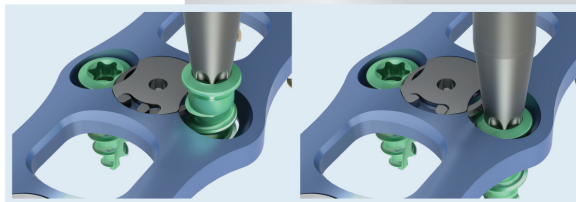
Anatomical lordotic curvature

to fit the anatomy of the patient which simplifies the surgery time by reducing the need to further bend the plate

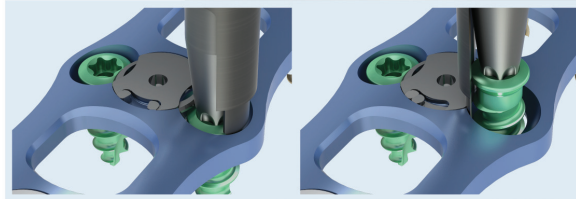
Additional bending zone

Pre-assembled one-step locking mechanism enables one instrument to insert and lock screws into place, while preventing screw rotation and backout

Screw Insertion ▶



Screw Removal ▶



Screw size

Diameter (mm)	Screw Length (mm)										
	10	11	12	13	14	15	16	17	18	19	20
3.5	✓	✓	✓	✓	✓	✓	✓	✓	✓	✓	✓
4.0	✓	✓	✓	✓	✓	✓	✓	✓	✓	✓	✓
4.35	✓	✓	✓	✓	✓	✓	✓	✓	✓	✓	✓

Plate size

Plate	Plate Length (mm)														
	19	21	23	25	27	29	31	33	35	37	39	41	43	45	
Lv.1															
Lv.2															
Lv.3															
Lv.4															

Approved by **FDA**

555 W Lambert Road Suite F Brea, CA 92821
Tel. +1 714 280 4955 Fax. +1 714 209 7571
www.youic.com

U&I CORPORATION
BR-NC01, Rev. 00