

Revival™

When complexity meets simplicity



Corin

Connected Orthopaedic Insight

Modular hip stem system with focussed implant options delivered by a simple but effective instrument platform.

Revival™

When complexity meets simplicity

The Revival™ modular stem system offers strength and stability whilst facilitating the reconstruction of complex patient anatomy using a simple but effective two-tray core instrument kit.

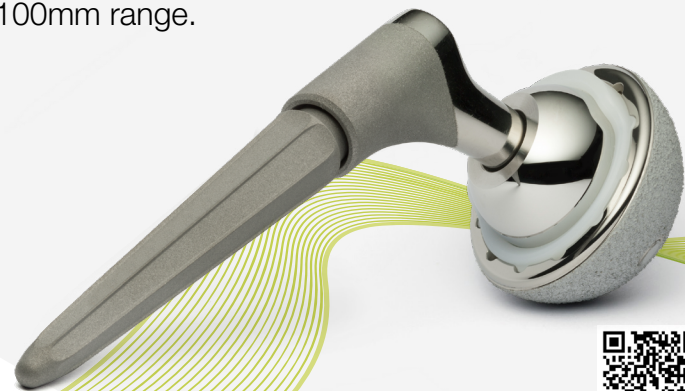
360° proximal freedom means custom stem version can be set to match or correct specific patient anatomy.

Taper strength and stability¹ can be achieved through a 2° 51' Morse taper connection and titanium locking screw.

Distal stems are tapered aiming to minimise subsidence², longitudinal splines provide torsional stability through a press fit and roughened corundum-blasted surfaces support bone on-growth³ for long term stability.

Revival™, coupled with Trinity™ PLUS acetabular shells, can provide a revision solution for the majority of cases.

Treatment of specific primary indications, such as hip dysplasia, is provided through the Revival™ 100mm range.



1. Data on file at Corin Group

2. Modular Femoral Tapered Revision Stems in Total Hip Arthroplasty Benjamin M. Frye, MD, Keith R. Berend, MD, Michael J. Morris, MD, Joanne B. Adams, BFA, Adolph V. Lombardi, Jr., MD, FACS. JISRF Reconstructive Review, Vol. 3, No. 3, December 2013: 32-37

3. Biologic fixation of a press-fit titanium hip joint endoprosthesis. Zwymüller KA1, Lintner FK, Semlitsch MF. Clinical Orthopaedics and Related Research. 1988 Oct;(235):195-206.