

celebrating
25
years

Uniglide™

Unicompartmental Knee Replacement



Corin

Responsible Innovation

One patient, One choice

Uniglide™

Mobile

All polyethylene fixed

Medial

Lateral

Cemented

Cementless

TiN

CoCr





celebrating
25
years

93.1% survivorship
at up to 15 years follow-up¹

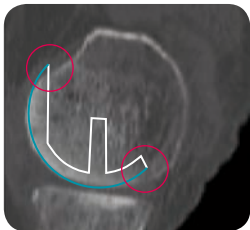
Uniglide™

The most versatile unicompartmental knee portfolio, Uniglide™ incorporates the key elements needed to take an innovative step forward in high-performance unicompartmental knee surgery.

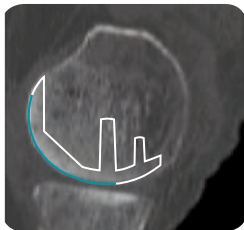
Stability by design

Uniglide™ restores anatomy with contour matched femurs:

- Minimises posterior overhang and anterior impingement
- Preserves natural load centres



Competitor single radius UKR demonstrating posterior overhang and anterior impingement



Incorporating a single radius in its active flexion arc only, Uniglide's anatomic design mimics the condyle's natural curvature

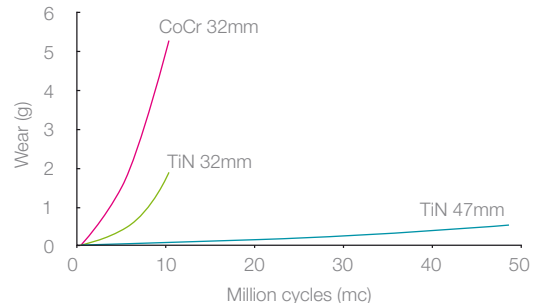
Ultra low wear

Uniglide™ optimises UKR performance through TiN ceramicised surface technology:

- 60% reduction in wear²
- 80% reduction in metal ion release³



Wear rates at 5 million cycles²

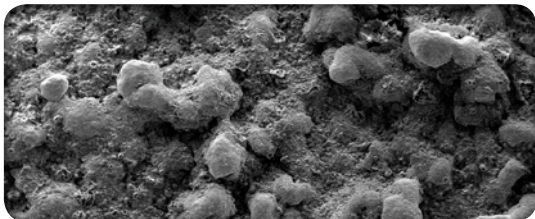


Confident fixation

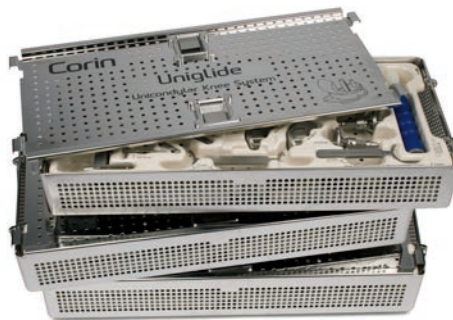
Designed to minimise the risk of loosening, the Uniglide™ femoral component incorporates a keel and two pegs offering rotational stability from the onset.

Cementless Uniglide™ components incorporate an advanced, biomimetic, fully resorbable, microcrystalline, calcium phosphate coating:

- Accelerates the bone in-growth process⁴
- Provides a large area for osseointegration⁵
- Increases implant tolerance to micro-movements⁶



The only UKR with over 20 years experience in advanced cementless technology^{7,8,9}



Procedural simplicity

Instruments for the complete Uniglide™ portfolio are contained within an efficient three-tray system, providing intra-operative choice and procedural simplicity, minimising hospital operating costs.

Corin

References:

1. Medium-term unicompartmental knee replacement. Cemented vs cementless. Bontemps G, Schluter-Brust K. Combined Orthopaedic Associations meeting, September 2010, Glasgow
2. Pappas MJ, Makris G, Buechel FF. Titanium nitride ceramic film against Polyethylene. *Clin Ortho Rel Res* 1995;317:64-70.
3. Internal Test Report, DOT GmbH, data on file Corin Ltd
4. Schwarz ML, Kowarsch M, Rose SB, Jani L. Histomorphometrical and mechanical evaluation of various surfaces on titanium test bodies placed into femora of the Göttinger minipig. Can a resorbable CaP coating increase osteointegration? 49th Annual Meeting of the Orthopaedic Research Society 2003; Poster.
5. Zeggel P. Bioactive calcium phosphate coatings for dental implants. A summarising characterisation of BONIT-FBR. *International Magazine of Oral Implantology* 1/2000; 51-57.
6. Zeggel P, Becker P. BONIT®. A biomimetic calcium phosphate coating connects bone and implant surfaces. *BONEZone* Summer 2003.
7. Wood PLR, Deakin S. Total ankle replacement. The results in 200 ankles. *J Bone Joint Surg (Br)* 2003; 85-B:3:334.
8. Saxler G, Temmen D, Bontemps G. Medium-term results of AMC-unicompartmental knee arthroplasty. *The Knee* 2004; 11:39-355.
9. Schlueter-Brust KU, Kruse S, Bontemps G. Twelve year survivorship after cemented and uncemented medial unicompartmental knee arthroplasty. 15th EFFORT Congress June 2014

Uniglide™

Unicompartmental Knee Replacement

Corin

www.coringroup.com

©2015 Corin P No. I1210 Rev2 02/2015 ECR 13699